



METRO

YOUR SUCCESS IS OUR BUSINESS

METRO

METRO NOM

WHY?

EU LEGISLATION

CUSTOMERS



METRO

YOUR SUCCESS IS OUR BUSINESS

FOOD SAFETY



SUSTAINABILITY



SUPPLIER BENEFITS



INCREASED TRUST



READY FOR THE FUTURE

```
14 <?php language_attribute('charset');  
15 <?php language_attribute('width=device-width');  
16 <?php language_attribute('height=device-height');  
17 <?php language_attribute('viewport');  
18 <?php language_attribute('profile');  
19 <?php language_attribute('pingback');  
20 <?php language_attribute('fruitful_get_favicon');  
21 <?php language_attribute('fruitful_get_favicon');  
22 <?php language_attribute('fruitful_get_favicon');  
23 <?php language_attribute('fruitful_get_favicon');  
24 <?php language_attribute('fruitful_get_favicon');  
25 <?php language_attribute('fruitful_get_favicon');  
26 <?php language_attribute('fruitful_get_favicon');  
27 <?php language_attribute('fruitful_get_favicon');  
28 <?php language_attribute('fruitful_get_favicon');  
29 <?php language_attribute('fruitful_get_favicon');  
30 <?php language_attribute('fruitful_get_favicon');  
31 <?php language_attribute('fruitful_get_favicon');  
32 <?php language_attribute('fruitful_get_favicon');  
33 <?php language_attribute('fruitful_get_favicon');  
34 <?php language_attribute('fruitful_get_favicon');  
35 <?php language_attribute('fruitful_get_favicon');
```

INCREASED VISIBILITY



OPTIMIZED PROCESSES



CUSTOMER BENEFITS



ABILITY TO CHOOSE



SAFE FOOD



TRACEABLE IN THE OWN APP



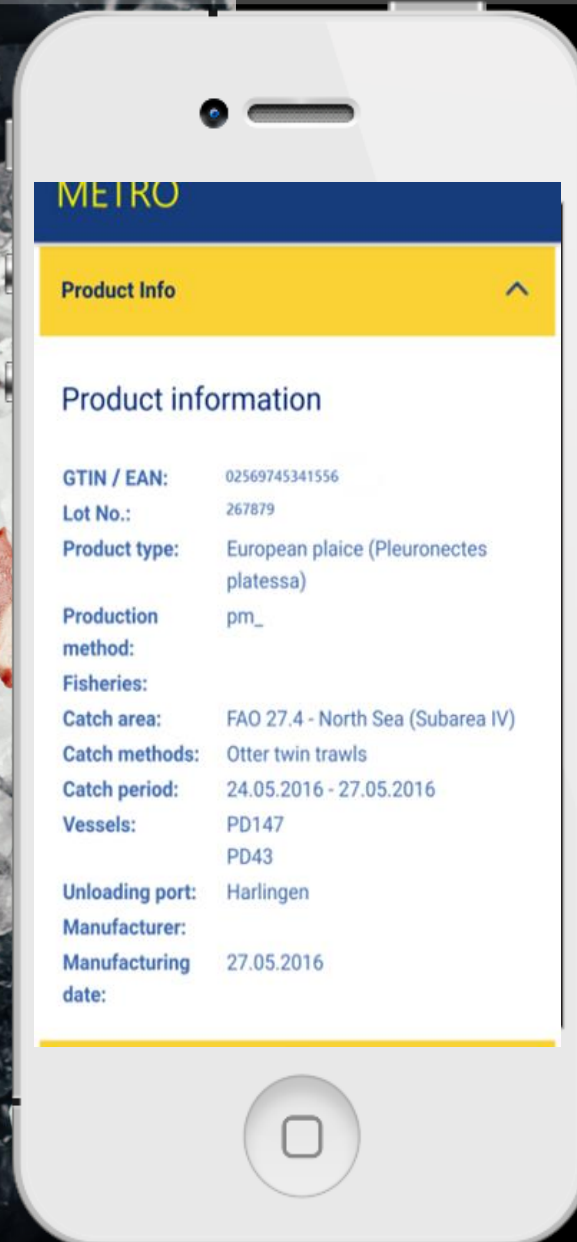
PRODUCT INFO

PROCESSING COMPANY

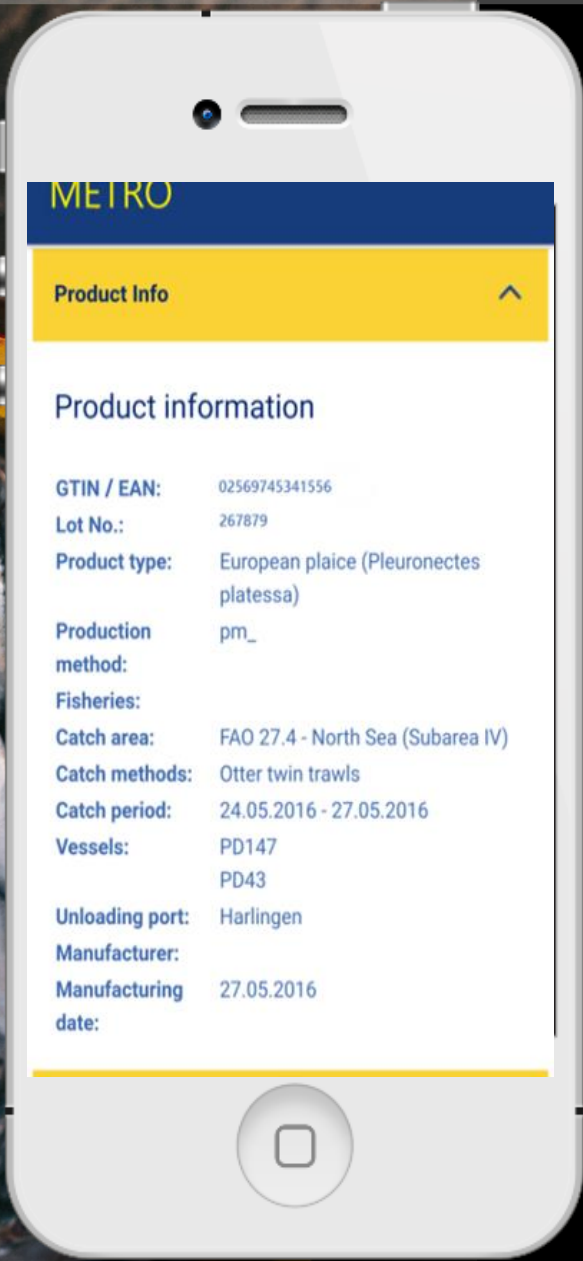
SLAUGHTERING
COMPANY

MEAT ORIGINS

COUNTRY OF BIRTH



TRACEABLE IN THE OWN APP



PRODUCT INFO

CATCH METHOD

ORIGIN

SPECIES

TRACEABLE ON THE SHELF



WHAT IS **PIER**?

ONBOARDING
OF METRO
ULTRA-
FRESH
SUPPLIERS

METRO's
inhouse
traceability
solution

DATA COLLECTION FOR
FOOD SAFETY
EU REGULATION
INTERNAL PURPOSES &
MARKETING
INFORMATION

TAILOR –MADE
INTEGRATED
PLATFORM

USER-FRIENDLY

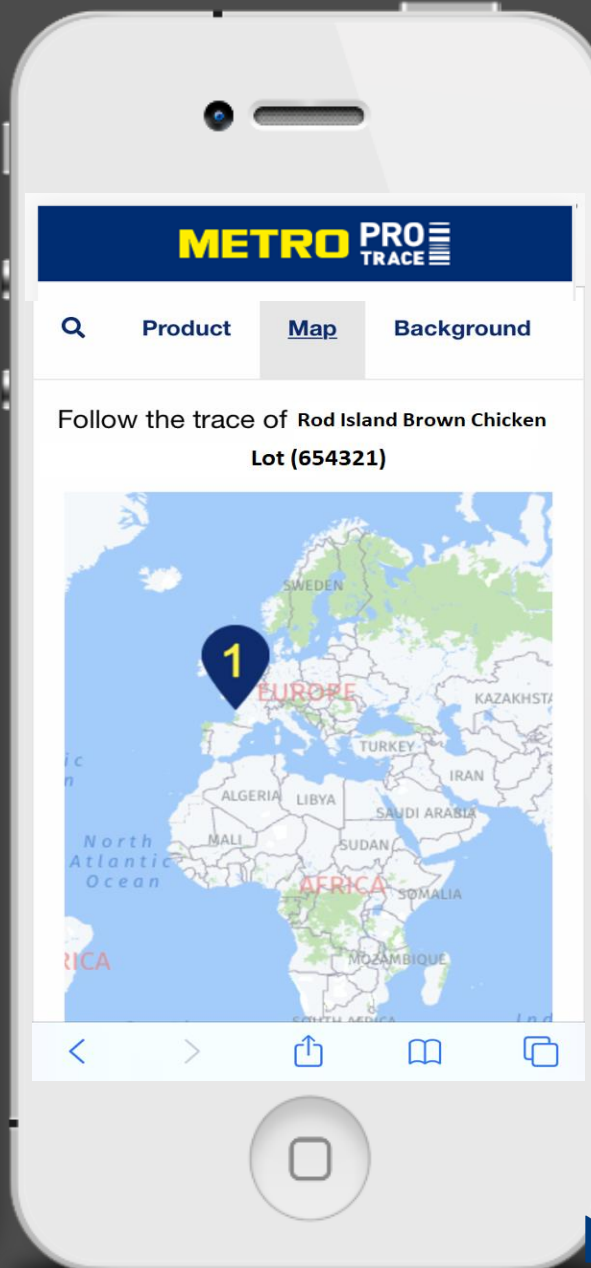
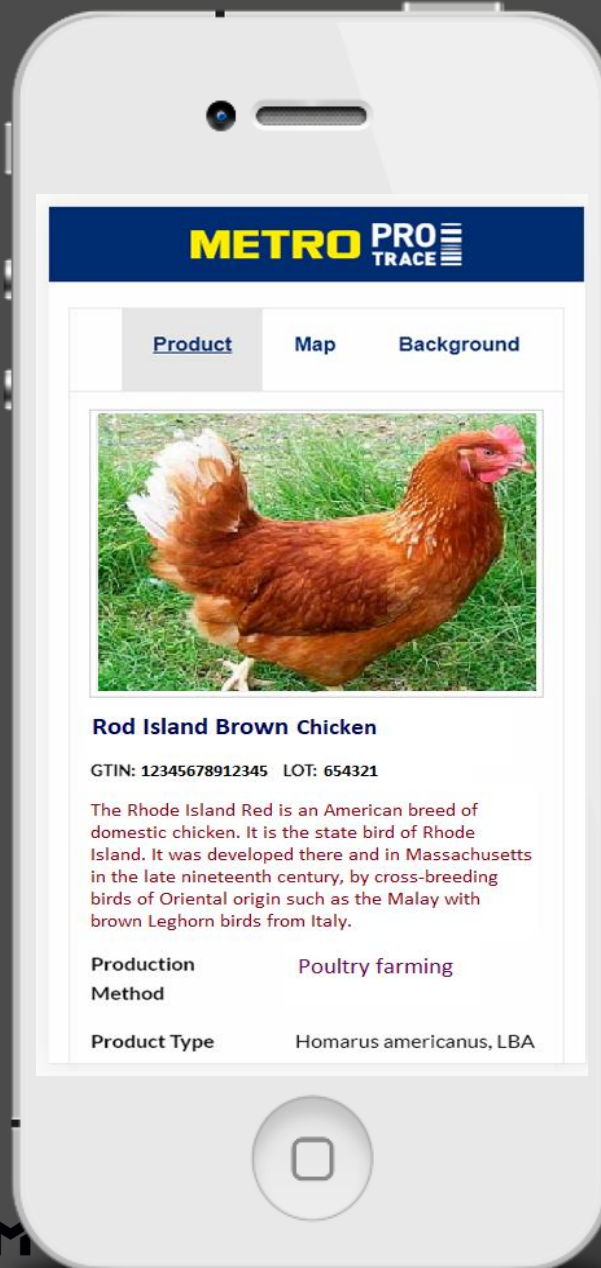
FREE OF
CHARGE

PROMOTION OF
YOUR
COMPANY

PIER 2.0 (1/2) – Your product story

Product Information

- ▶ GTIN
- ▶ LOT
- ▶ Production Method
- ▶ Type
- ▶ Processing Company
- ▶ Processing date
- ▶ Catch Method
- ▶ Catch Area



Interactive MAP

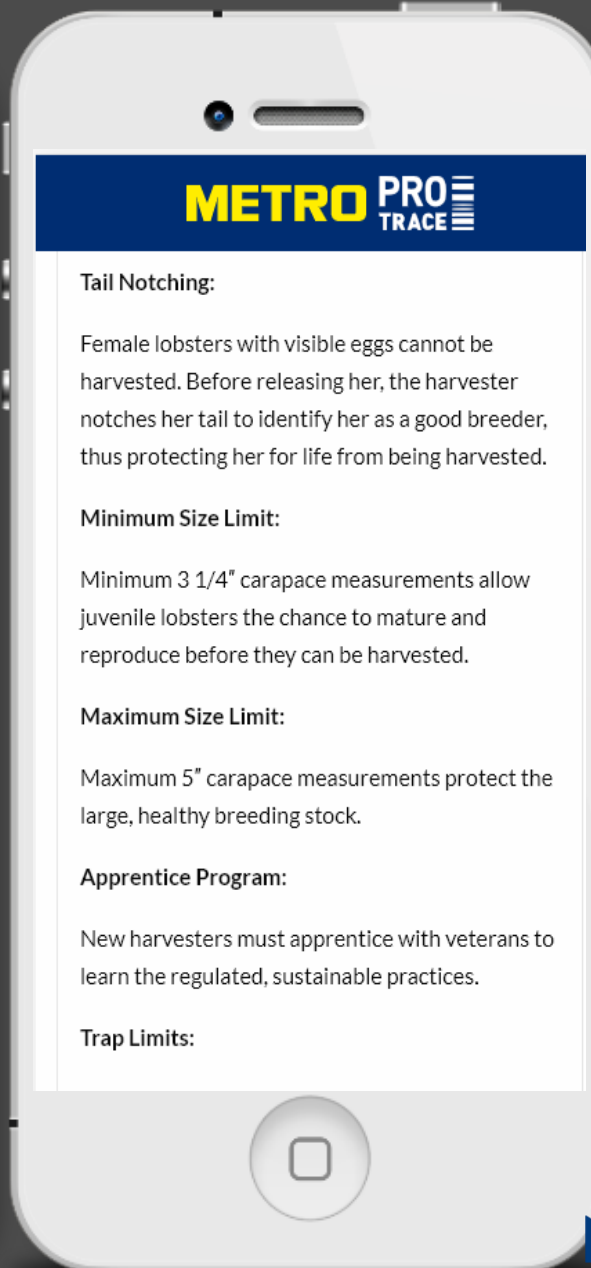
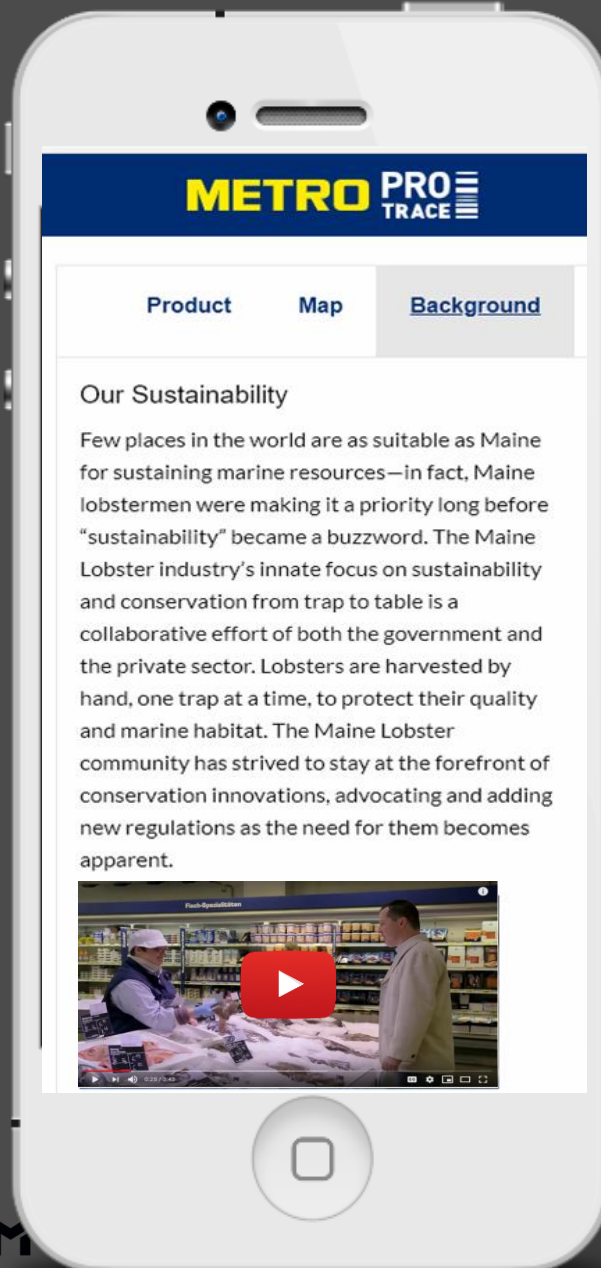
- ▶ Ability to zoom
- ▶ Applicable to show multiple locations

de en es

PIER 2.0 (2/2) – Your product story

Background Information (1/2)

- ▶ About the company
- ▶ Sustainability info
- ▶ Catching method details

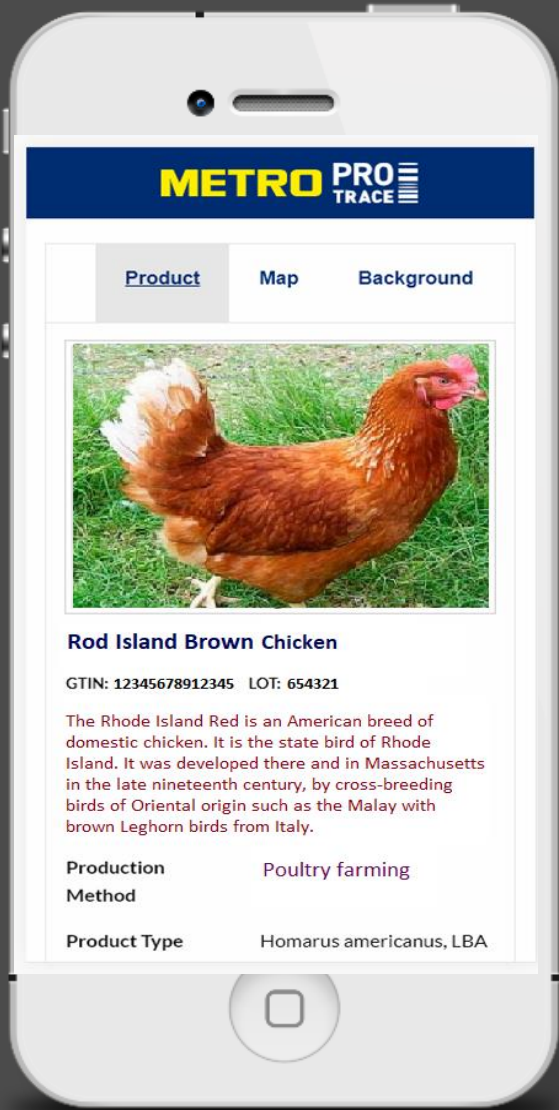


Background Information (2/2)

- ▶ Add pictures
- ▶ Add videos to show traceability
- ▶ EPCIS technology
- ▶ No restrictions to size of the files

de en es

PIER 2.0 – How to retrieve the information?



OPTION 1: Scan the barcode



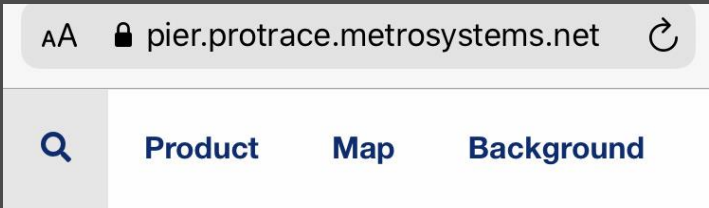
Retrieve the product story in PROTRACE APP



OPTION 2: Scan the QR code



Retrieve the product story on the specific product website



YOUR ON-BOARDING JOURNEY

PREPARATION

1. GET THE TRAINING
2. CHOOSE AN OPTION FOR DATA UPLOADING
3. REQUEST FOR GLN & GTINS FROM YOUR LOCAL GS1
4. CREATION AND ASSIGNING OF GTIN 14

ON-BOARDING BOOTCAMP

1. VALIDATION OF MASTER DATA
2. PIER LOGIN CREDENTIALIALS WILL BE SENT TO YOU

USAGE

1. LOG INTO PIER
2. SUBMIT YOUR TRACEABILITY DATA
3. CHECK YOUR LABELING

PREPARATION 2: CHOOSE AN OPTION FOR DATA UPLOADING

MANUAL

SEMI AUTOMATIC

AUTOMATIC



HOW MANY ARTICLES DO YOU HAVE?
HOW OFTEN DO YOU SUPPLY TO METRO?

PREPARATION 3: REQUEST FOR GLN & GTINS **FROM YOUR LOCAL GS1**

GS1 GLOBAL – find & contact

<https://www.gs1.org/>

Search by GLN – check your GLN

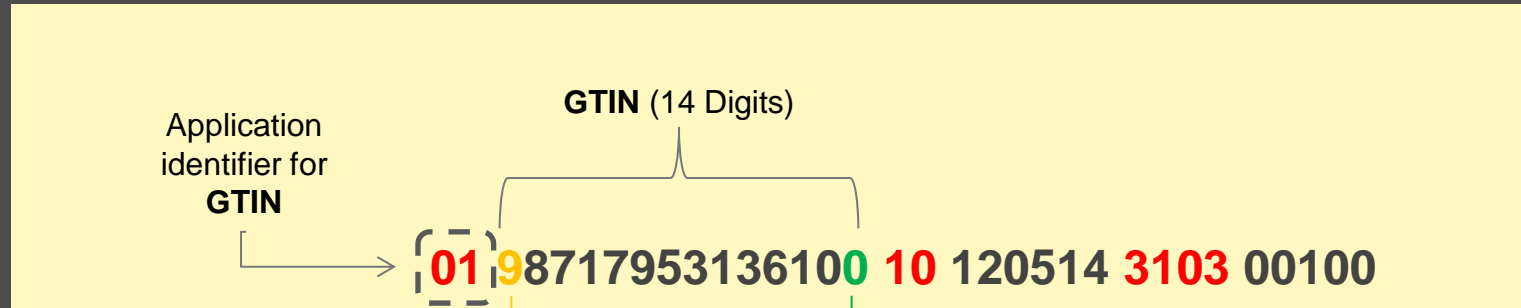
<http://gepir.gs1.org/index.php/search-by-gln>

Search by GTIN – check existing or new GTINS

<http://gepir.gs1.org/index.php/search-by-gtin>

PREPARATION 4 (1/2): CREATION OF GTIN 14

From your Local GS1 Provider you will receive a 13 digits code (GTIN13). In order to build your GTIN14 you have to add the first digit and then recalculate the last (check digit).



Type of weight Digit: In case of having a 13 digits code (GTIN13), you will have to add the first digit according to the type of weight of the product:

- **Fix-weight** products will always start with **0**.
- **Variable weight** products will always start with **9**.

Check Digit: Last digit comes from a formula depending on the other 13 values of the GTIN14.

Can be calculated on <https://www.gs1.org/services/check-digit-calculator>

Calculate a check digit

GS1 key without check digit

Calculate

PREPARATION 4 (1/2): CREATION OF GTIN 14

STEPS TO CHECK YOUR GTIN14

1. Add your **GTIN13** in the search bar
2. Add 0 or 9 at the beginning of your GTIN13
3. Delete the last digit
4. Click on “Calculate check digit”
5. You will receive your GTIN14

Calculate a check digit

GS1 key without check digit

Calculate

8717953136107



98717953136100

PREPARATION 4 (2/2): ASSIGNING OF GTINs



FISH



**FISHING
FARMING**



PROCESSING



MEAT



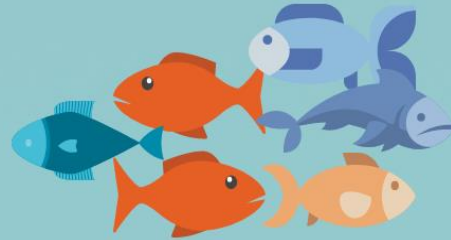
SLAUGHTERING



PROCESSING

FISH

Step 1: Fishing/Farming



GTIN "A" is assigned

Fisherman catches



Step 2: Processing

Final

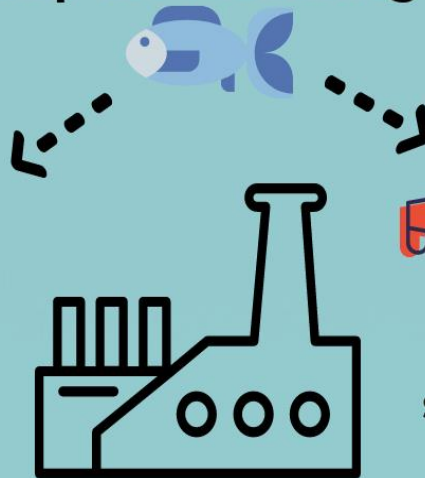
Product



Situation A



Supplier sells the whole fish and assigns **GTIN "A"**



Final

Product



Situation B



Supplier processes the fish and assigns **GTIN "B"**

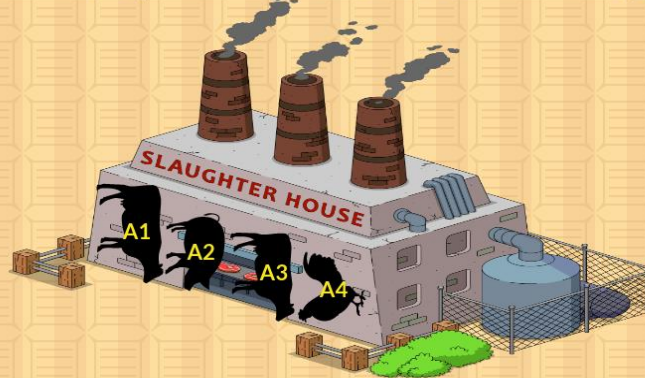
MEAT

Step 1: Slaughtering

RAW
product



RAW
product



Meat is slaughtered and
GTIN "A" is assigned

Final
products

Step 2: Processing

Final
products



Situation A



Supplier sells the carcass
and assigns **GTIN "A1"**



Situation B



Supplier processes the carcass
and assigns **"GTIN "B1, B2, B3..."**



Situation C



Supplier processes raw products, mixes
them and assigns **GTIN "C"**

ONBOARDING 1: VALIDATION OF MASTER DATA

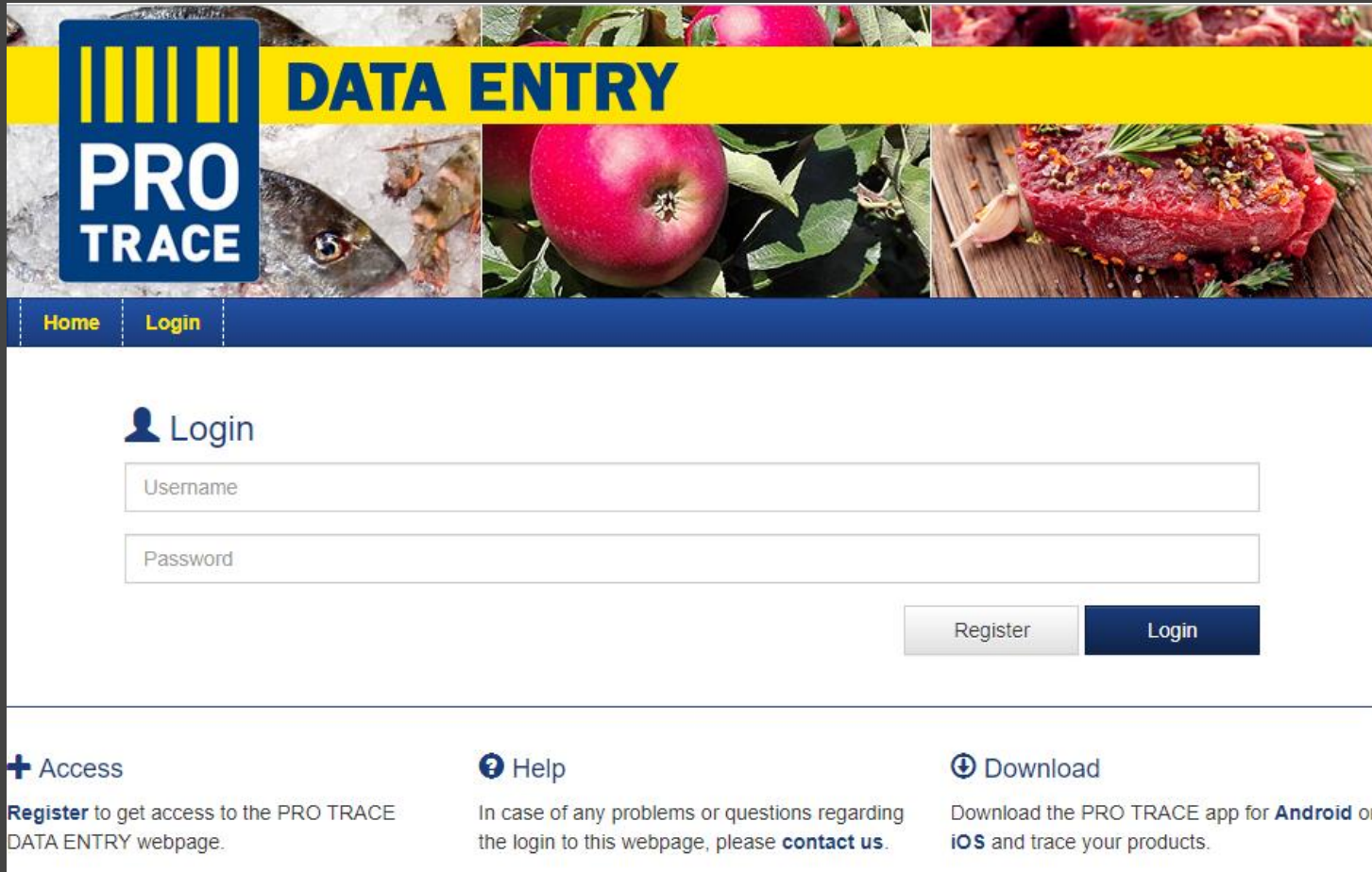
FILL in and SEND BACK TO
pier@sourcingsupport.de

File Home Insert Page Layout Formulas Data Review View PDF-XChange V6										
F8 MARINE_FISHERY										
PIER_FISH_TEMPLATE_V1.xlsx										
1	A	B	C	D	E	F	G	H	I	J
2	RAW MATERIAL & FINISHED PRODUCTS TEMPLATE									
3	Please be aware of that all green columns are mandatory to be filled in. Please use hyperlinks for detailed description of the each column.									
4	Company details		RAW MATERIAL details							
5	GLN	COMPANY NAME	RAW materials	RAW MATERIAL PRODUCT NAME	PRODUCTION METHOD	TYPE OF THE PRODUCT'S WEIGHT	SPECIES	GTIN 14 OF THE RAW PRODUCT	Source Country	FINISHED PRODUCTS
6										
7	Example:	Example:		Examples:	Example:	Example:	Example:	Please refer here to create your GTIN 14 out of GTIN 13	Example:	Examples:
8	4054738000050			Rainbow trout			Oncorhynchus	Example: 94000002000011		940000020000

File Home Insert Page Layout Formulas Data Review View PDF-XChange V6										
E14										
1	A	B	C	D	E	F	G	H	I	J
2	RAW MATERIAL & FINISHED PRODUCTS TEMPLATE									
3	Please be aware of that all green columns are mandatory to be filled in. You are welcomed to use hyperlinks for detailed description of the each column.									
4	COMPANY DETAILS		RAW MATERIAL DETAILS					FINISHED PRODUCT DETAILS (*only if you deliver)		
5	GLN	COMPANY NAME	RAW materials	RAW MATERIAL PRODUCT NAME	TYPE OF THE PRODUCT'S WEIGHT	GTIN 14 OF THE RAW PRODUCT	Source Country	FINISHED PRODUCTS	GTIN 14 OF THE FINISHED PRODUCT	NAME OF THE FINISHED PRODUCT
6										
7	Example:	Example:		Examples:	Example:	Please refer here to create your GTIN 14 out of GTIN 13	Example:		Examples:	Examples:
8	4054738000050	Best Customer Product, Inc		Pig Carcass	Fixed	Example: 94000002000011	Spain		94000002000014	Half pig
9	4054738000050					03790001000013			03790001000015	Hindquarter
10	Your GLN	Your company name	RAW	Name of the first raw product		GTIN of the first raw product		FINISHED	GTIN of the first finished product	
11	Your GLN	Your company name	RAW	Name of the second raw product		GTIN of the second raw product		FINISHED	GTIN of the second finished product	
12	RAW		FINISHED		
13			RAW					FINISHED		
14			RAW					FINISHED		
15			RAW					FINISHED		
16			RAW					FINISHED		
17			RAW					FINISHED		
18			RAW					FINISHED		
19			RAW					FINISHED		
20			RAW					FINISHED		
21			RAW					FINISHED		

USAGE 1: LOG INTO PIER


USERNAME & PASSWORD will be sent by **EECC GmbH**



DATA ENTRY

PRO TRACE

[Home](#) [Login](#)

 Login

Username

Password

[Register](#) [Login](#)

+ Access
Register to get access to the PRO TRACE DATA ENTRY webpage.

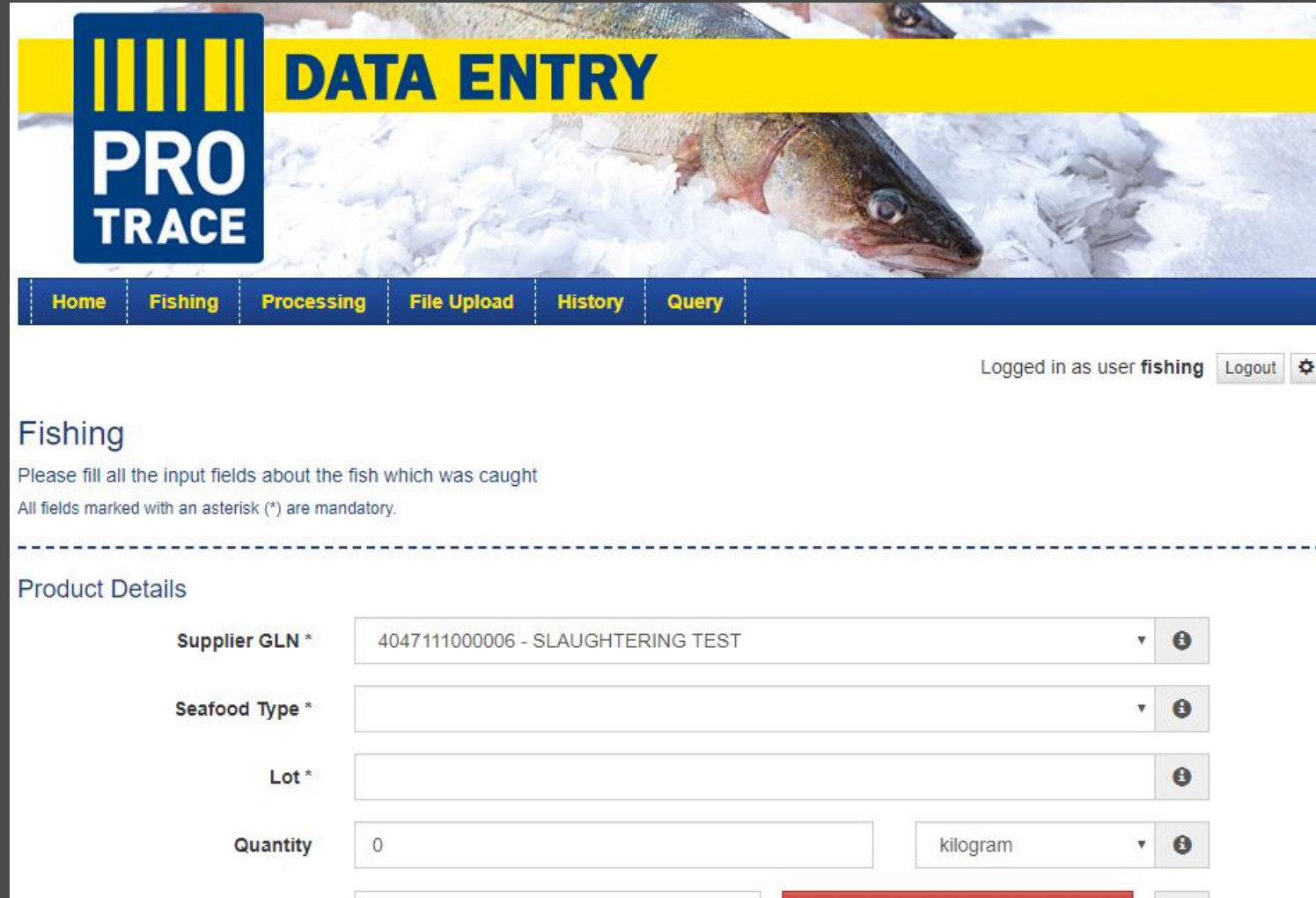
? Help
In case of any problems or questions regarding the login to this webpage, please **contact us**.

Download
Download the PRO TRACE app for **Android** or **iOS** and trace your products.

USAGE 2: SUBMIT YOUR TRACEABILITY DATA

OPTION 1 – MANUAL Upload

PROVIDE DATA **PER EACH GTIN AND LOT* NUMBER**



The screenshot shows the 'PRO TRACE' web application interface. At the top, there's a yellow banner with the text 'DATA ENTRY' and a blue logo with 'PRO TRACE' and a barcode. Below the banner is a navigation bar with links: Home, Fishing, Processing, File Upload, History, and Query. The 'Fishing' link is active. In the top right corner, it says 'Logged in as user fishing' with 'Logout' and a settings icon. The main content area is titled 'Fishing' and contains instructions: 'Please fill all the input fields about the fish which was caught' and 'All fields marked with an asterisk (*) are mandatory.' Below this is a section titled 'Product Details' with several input fields: 'Supplier GLN *' (pre-filled with '4047111000006 - SLAUGHTERING TEST'), 'Seafood Type *' (empty), 'Lot *' (empty), and 'Quantity' (pre-filled with '0' and a unit dropdown set to 'kilogram'). Each field has an information icon (i) to its right.

PRO TRACE

DATA ENTRY

Home Fishing Processing File Upload History Query

Logged in as user **fishing** Logout ⚙️

Fishing

Please fill all the input fields about the fish which was caught
All fields marked with an asterisk (*) are mandatory.

Product Details

Supplier GLN * 4047111000006 - SLAUGHTERING TEST ⓘ

Seafood Type * ⓘ

Lot * ⓘ

Quantity 0 kilogram ⓘ

***EVERY NEW SHIPMENT = NEW LOT NUMBER**

USAGE 2: SUBMIT YOUR TRACEABILITY DATA

OPTION 2 (page 1): SEMI-AUTOMATIC UPLOAD

[illegible]

USAGE 2: SUBMIT YOUR TRACEABILITY DATA

OPTION 2 (page 2) - SEMI-AUTOMATIC UPLOAD: HOW DOES IT WORK?

- CONFIGURATION UPFRONT
- ADD ARTICLE, LOCATION, FARM MASTER DATA
- ONLY OUTPUT DATA IS ENTERED
- INPUT DATA IS GENERATED BY THE CONVERTER BASED ON THE OUTPUT LGTIN
- WORKS WITHOUT RAW GTINS

SLAUGHTERING (INPUT)

```
<ObjectEvent>
  <eventTime>2019-03-24T00:00:00Z</eventTime>
  <eventTimeZoneOffset>+02:00</eventTimeZoneOffset>
  <epcList/>
  <action>ADD</action>
  <bizStep>urn:epcglobal:cbv:bizstep:commissioning</bizStep>
  <readPoint>
    <id>urn:epc:id:sgln:4005615.00000.0</id>
  </readPoint>
  <bizLocation>
    <id>urn:epc:id:sgln:4005615.00000.0</id>
  </bizLocation>
  <extension>
    <quantityList>
      <quantityElement>
        <epcClass>urn:epc:class:lgtn:4018294.089310.201903240b</epcClass>
        <quantity>1</quantity>
        <uom>KGM</uom>
      </quantityElement>
    </quantityList>
    <ilmd>
      <fT:preStageDetails>
        <fT:agricultureDetails>
          <fT:farmIdentificationNumber fT:farmIdentType="GLN">4000001000005</fT:farmIdentificationNumber>
          <fT:proportionPercentOfLot>100</fT:proportionPercentOfLot>
          <fT:proportionRankingOfLot>1</fT:proportionRankingOfLot>
          <fT:countriesOfBirth>
            <fT:countryCode>DE</fT:countryCode>
          </fT:countriesOfBirth>
        </fT:agricultureDetails>
      </fT:preStageDetails>
    </ilmd>
  </extension>
</ObjectEvent>
```

PROCESSING (OUTPUT)

```
<TransformationEvent>
  <eventTime>2019-03-24T00:00:00Z</eventTime>
  <eventTimeZoneOffset>+02:00</eventTimeZoneOffset>
  <inputQuantityList>
    <quantityElement>
      <epcClass>urn:epc:class:lgtn:4018294.089310.201903240b</epcClass>
      <quantity>1</quantity>
      <uom>KGM</uom>
    </quantityElement>
  </inputQuantityList>
  <outputQuantityList>
    <quantityElement>
      <epcClass>urn:epc:class:lgtn:4018294.089310.201903240</epcClass>
      <quantity>1</quantity>
      <uom>KGM</uom>
    </quantityElement>
  </outputQuantityList>
  <bizStep>urn:epcglobal:cbv:bizstep:transforming</bizStep>
  <readPoint>
    <id>urn:epc:id:sgln:4047111.00001.0</id>
  </readPoint>
  <bizLocation>
    <id>urn:epc:id:sgln:4047111.00001.0</id>
  </bizLocation>
  <ilmd>
    <fT:useByDate>2019-06-24</fT:useByDate>
    <fT:bestBeforeDate>2019-06-24</fT:bestBeforeDate>
  </ilmd>
</TransformationEvent>
```

Input LGTIN / Input Quantity is generated based on the
Output LGTIN / Output Quantity

USAGE 2: SUBMIT YOUR TRACEABILITY DATA

OPTION 3: AUTOMATIC / CAPTURE INTERFACE

Submission of EPCIS Events (XML) via web service

WHAT

TECHNIQUE TO SUBMIT DATA

XML VIA HTTP POST

AUTHENTICATION

BASIC

USER CREATION

DURING MASTER DATA
UPLOAD PROCESS

XML STRUCTURE

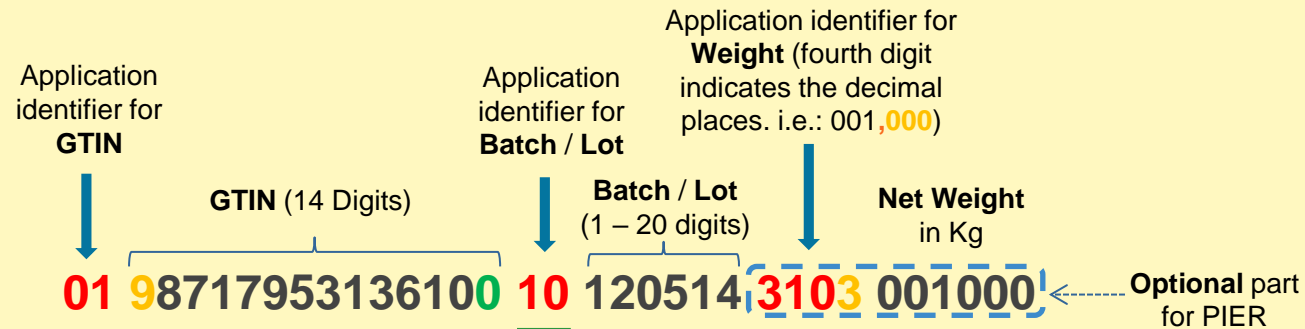
FOR SUPPLIERS WITH:

- **HIGH AMOUNT** OF DATA
- **IT CAPABILITIES** ONSITE
(DEPARTMENT & EMPLOYEES)
- **CAPABLE TO IMPLEMENT THE LOGIC** TO CREATE AND SUBMIT XML FILES TO PIER

THE EPC GLOBAL STANDARD

USAGE 3: CHECK YOUR LABELING

KEY POINTS of GS1-128 BARCODE



GS1-128 code:

0198717953136100101205143103001000

GS1-128 Barcode:



List of all application identifiers

<https://www.gs1.org/standards/barcodes/application-identifiers>

Note: In some examples the application identifier are written with spaces or in brackets, this is just for readability and shall not be encoded into the barcode:



010871



(01) 0871

YOUR ON-BOARDING JOURNEY

PREPARATION

ON-BOARDING BOOTCAMP

USAGE



GET THE TRAINING

1. VALIDATION OF
MASTER DATA

1. LOG INTO PIER



CHOOSE AN OPTION
FOR DATA UPLOADING

2. PIER LOGIN
CREDENTIALIALS
WILL BE SENT TO YOU

2. SUBMIT YOUR
TRACEABILITY DATA

3. REQUEST FOR GLN &
GTINS FROM YOUR
LOCAL GS1

3. CHECK YOUR
LABELING

4. CREATION AND
ASSIGNING OF GTIN 14

TUTORIALS & TIMELINE



**PRO
TRACE**

DATA ENTRY

[Home](#)

[Login](#)

Welcome to PRO TRACE!

Get on board with METRO

[About](#)

[Tutorials](#)

[Guides](#)

[Templates](#)

[On-boarding steps](#)

What means PRO TRACE?

- ✓ **PRO** like "product": Using PRO TRACE you get more information about a product to the store, get your questions answered.
- ✓ **PRO** like "professional" as our professional customers and the professional quality.
- ✓ **PRO** means "for": METRO commits proactive for traceability and transparency
- ✓ **TRACE** is the benefit, it is about: traceability of products for every customer, e

Welcome to PRO TRACE!

Get on board with METRO

[About](#)

[Tutorials](#)

[Guides](#)

[Templates](#)

[On-boarding steps](#)

Check the next steps

5 steps to success, the on-boarding process run through the following steps.





METRO

YOUR SUCCESS IS OUR BUSINESS



BUSINESS OWNER:

CORPORATE RESPONSIBILITY

Britta Gallus

britta.gallus@metro.de

FIRST LEVEL SUPPORT

OFFER SOLUTION SERVICES

pier@sourcingsupport.de

eLearnings & "HOW TOs"

<https://suppliers.sourcingsupport.metro.de/support/solutions/15000003769>



PRODUCT OWNERS:

SUPPLY CHAIN

OLIVER TESCHL

oliver.teschl@metronom.com

BENJAMIN MAAS

benjamin.maas@metronom.com

MIKAEL KHALIKIAN

mikael.khalikian@metronom.com

RTO

Salome Magembe

salome.magembe@metro-rto.com

CTO

Jozsef Bardos

jozsef.bardos01@metro-cto.com